

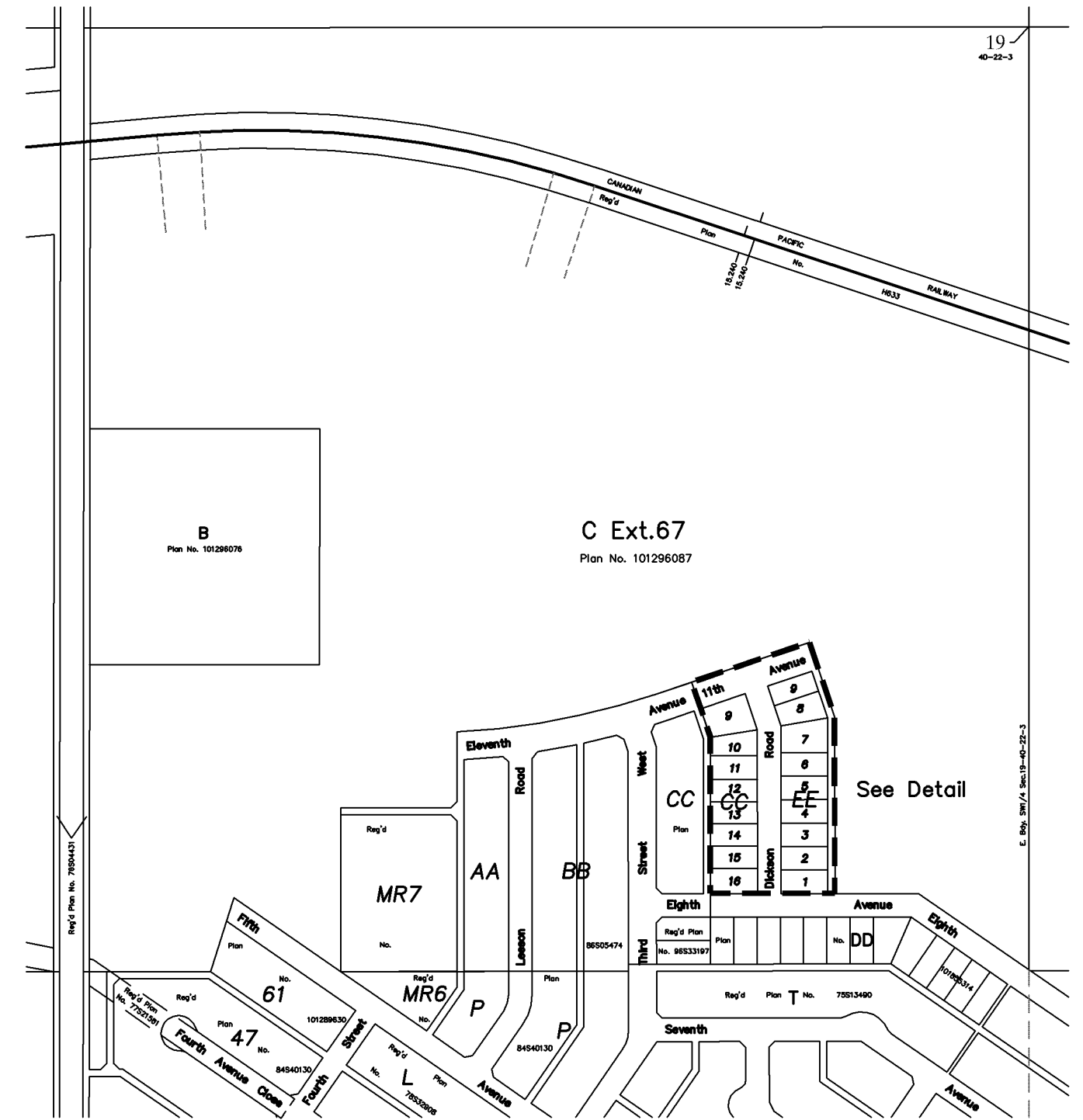
THE SUBDIVISION SHOWN WITHIN THE BOLD DASHED LINE IS HEREBY APPROVED AS PER THE ATTACHED NOTICE OF DECISION

*Justin Meyer*  
 DIRECTOR OF COMMUNITY PLANNING  
 VALID FOR 24 MONTHS FROM: APR 05 2006

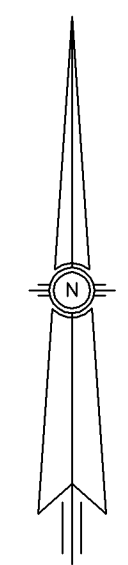
**PLAN SHOWING  
 PROPOSED SUBDIVISION  
 BLOCKS CC AND EE  
 WITHIN  
 PARCEL C  
 PLAN NO. 101296087  
 S.W.1/4 SEC.19-40-22-W3M**

SCALE 1:1000  
 BY  
 J.K. MEYER, S.L.S.  
 MARCH 3rd, 2006  
 TOWN OF UNITY  
 SASKATCHEWAN

*Justin Meyer*  
 Justin Kent Meyer Saskatchewan Land Surveyor



LOCATION PLAN  
 SCALE 1:5000



**Note:**

Portion to be approved is outlined in a bold dashed line and contains 2.123 ha (5.25 Ac.) including 1.402 ha (3.46 Ac.) in residential lots. Measurements are in metres and decimals thereof.  
 Owners: Town of Unity

**CALTECH  
 SURVEYS LTD**  
 Ph: (306) 228-4366 Fax: (306) 228-4367